



CHROM SYSTEM



STAINLESS STEEL
STEEL
ALUMINIUM

OVER 20 YEARS
OF EXPERIENCE

CHROMSYSTEM sp. z o.o.





.....

.....

.....

.....

.....

.....

.....

.....

.....

.....

.....

CONTENTS

THE BENEFITS OF STAINLESS STEEL	1
ECOLOGICAL ASPECTS	2
SATIN FINISHING	3
POLISHING OF STAINLESS STEEL	4
MOONSYSTEM®	6
RAILINGS	8
STAIRS	10
GATES AND ROOFINGS	12
FURNITURE AND INTERIOR DESIGN	14
PROJECTS AND VISUALISATIONS	16
STEEL CONSTRUCTIONS	18
CUSTOM EXECUTIONS	20

THE BENEFITS 1 OF STAINLESS STEEL

Stainless steel is highly resistant to weather conditions. As a result, it is ideal for outdoor use and is an excellent addition to the existing or scheduled architecture, which will stand the test of time, while the use of long-lasting materials directly contributes to environmental protection.

Stainless steel structures do not have to have a simple form since they can be given any shape and decorated with selected elements.

Steel is one of the most luxurious finishing materials. The gleaming or matte finish of the stainless components adds a touch of elegance to the interior. Stainless steel looks tasteful both solo and in combination with other materials, such as wood, stone, brick, or glass.

Polished stainless steel is an excellent choice if we want to enlarge the space visually. Such products reflect light and are easier to handle. Ground stainless steel elements are less prone to scuffs and scratches, and the matt finish is particularly effective. In the case of painted components, we are limited only by our imagination. Hand-rails for stairs or balcony railings can be painted in any shade that matches the color scheme adopted for the interior or exterior of the building.

The Chromsystem company has developed its own stainless steel finishing system - Moon-system®, which gives the surface a beautiful and innovative pearl effect. A railing with such completion will add class and excellent style to the interior.



BENEFITS OF STAINLESS STEEL



HIGH CORROSION RESISTANCE



RESISTANCE TO FIRE AND HEAT



EASY TO KEEP CLEAN



CONTACT WITH FOOD



QUICK IN PRODUCTION



RESISTANCE TO ATMOSPHERIC CONDITIONS



RESISTANCE TO HIGH WEIGHT



AESTHETIC APPEARANCE



BIOLOGICALLY NEUTRAL



SIMPLE PROCESSING

ECOLOGICAL ASPECTS 2

The environmental friendliness of stainless steel is also an issue raised more and more often. It is biologically neutral, non-polluting, and successfully remelted. The long service life of objects made from it also means that stainless steel has a low carbon footprint compared with other similar materials. That means that its processing and subsequent operation emit little CO₂ into the atmosphere overall.

Stainless steel is used to create catalytic converters, which reduce the number of toxic substances in the exhaust gas produced by internal combustion engines. On the other hand, in diesel engines, stainless steel is used as a filter that separates soot and other harmful smoke elements.

Stainless steel is used in the manufacture of numerous devices that reduce fossil fuel consumption, such as solar panels, fuel cells, and condensing boilers.

The absence of the need for continuous substitution of parts because of its long help life brings about less waste creation.



As stainless steel is regularly the material of decision for contact with groceries, it is utilized for pipes conveying clean drinking water. Similar pipes are used to transport wastewater in such a way that it does not pose a threat to the environment.

The lightness of stainless steel components is essential for loading. Vehicles move using less energy and thus also produce fewer emissions of environmentally harmful substances.



TYPES OF SATIN - FINISHED SURFACES

S240CS



S320CS



S400CS



Our offer includes various types of satin surfaces, depending on your needs, you can choose from **satin in 4 variants**:

- S240CS
- S320CS
- S400CS
- S600CS

! We have tests from a laboratory profilometer and a durometer. Feel free to contact us to discuss the results.

Satin-finishing, i.e. abrasive processing consisting in giving the surface a specific grinding and thus the visual effect. Satin finishing of a surface, contingent upon its shape and purpose, is created by mechanical methods or with the use of hand-held power tools. Some forms of stainless steel products - sheets are offered with this type of surface finish.



EXAMPLE OF USE



4 POLISHING OF STAINLESS STEEL

A PHOTO OF A REFLECTION ON A STEEL SURFACE (SHARPNESS ON A REFLECTION)



A PHOTO OF THE STEEL SURFACE (FOCUS ON THE SURFACE)



SHINE CHROMSYSTEM

Surface comparable to an R2 reflective finish with **clear contours**.

Finish with **Ra < 0.100 µm**.

POLISH CHROMSYSTEM

A high reflectance finish where **details** are can be seen (face is clearly visible), metallurgical blemishes are not removed (scratches under the surface).

The effect is very much dependent on the feedstock.

Finish at the level of **Ra ~ 0.070 µm**.

! We have research from a laboratory profilometer and a durometer. Feel free to contact us to discuss the results.

In order to obtain a perfect surface smoothness **Ra<0,02µm**, and a **mirror effect**, and at the same time not to lose the possibility of welding (as in the case of electropolishing) **the only option is to make polishing by mechanical machining**. Chromsystem has developed an **innovative process** for polishing rectangular profiles, which meets the highest requirements.

This smooth surface is less prone to accumulate airborne dirt or moisture than any other rolling surface and is easy to clean.

In our offer, you can choose from 4 types of polished surfaces:

- Shine Chromsystem
- Polish Chromsystem
- Ultra Polish Chromsystem
- Premium Polish Chromsystem.



ULTRA POLISH CHROMSYSTEM

A finish with an ideal reflectance in which **fine details** are visible, metallurgical blemishes are removed, depending on the class of the material entrusted, occasional points may remain, selection of the material is recommended.

Finish at the level of **Ra ~ 0.050 μm.**

PREMIUM POLISH CHROMSYSTEM

A finish with a super ideal reflectance in which **all details** are visible, metallurgical blemishes are removed. The effect is possible to obtain after prior contact and joint selection of the material. It is recommended to order a profile polishing service together with the material.

! Not every material is suitable for the highest quality polish.

Finish exceeding available materials on the market **Ra ~ 0.030 μm.**



! * In the case of strict static requirements for the "Ultra Poler Chromsystem" surface, it is recommended to order a material 0.5 mm thicker (large material loss). The quality of the metallurgical product is responsible for the geometry of the profiles.

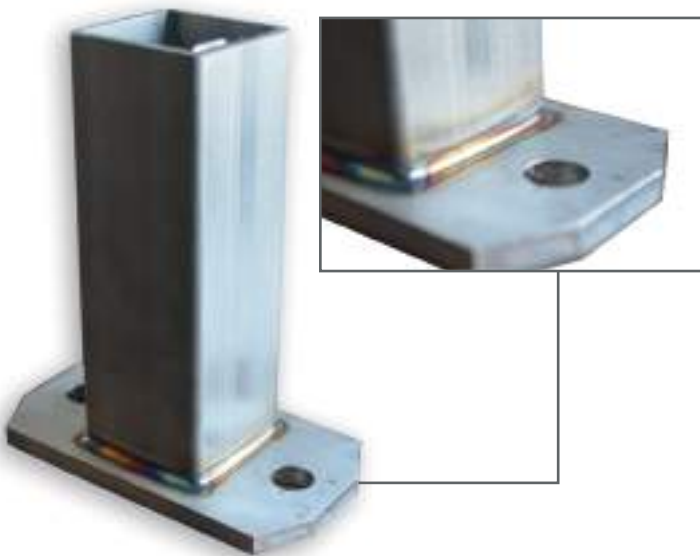
PEARL, SMOOTHNESS, PURITY, AESTHETICS

Pearl surface made in Moonsystem[®] technology, in addition to original visual qualities, is extremely resistant, has a **hydrophobic surface**, which increases resistance to dirt. This surface is especially dedicated to the food, chemical, and pharmaceutical industries. The process removes scale oxides, thermal discoloration caused by welding, and operational dirt. Surface treatment in the B2 class allows maintaining the smoothness below $Ra = 0.5 \mu m$ (depending on the steel grade).

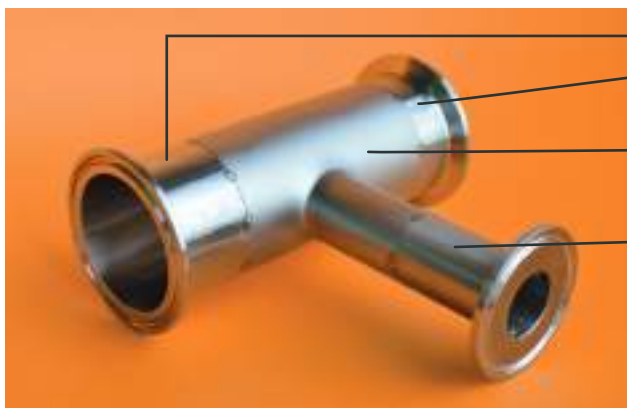


! *Moonsystem[®] surfaces can be produced on many different materials, however, the final Ra value is dependent on the input material.

RAW ELEMENT



AFTER MOONSYSTEM PROCESSING



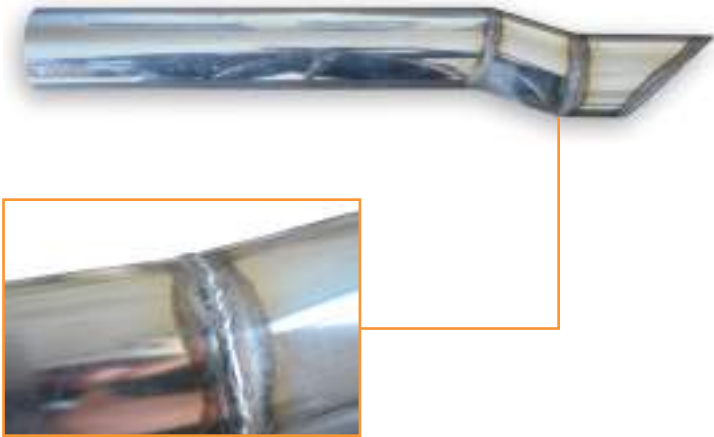
POLISHED SURFACE

MOONSYSTEM[®] SURFACE

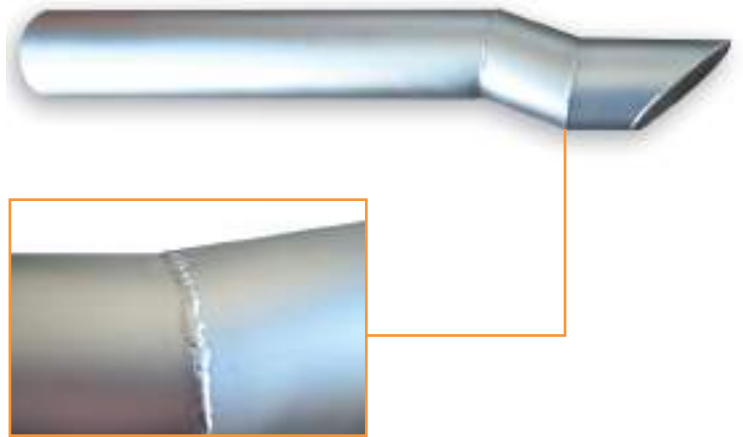
SATINED SURFACE

The Moonsystem[®] process also allows the inside of pipes and profiles to be processed.





WELDED ELEMENT BEFORE PROCESSING



WELDED ELEMENT AFTER MOONSYSTEM



WELDED ELEMENT BEFORE PROCESSING



WELDED ELEMENT AFTER MOONSYSTEM

The surface roughness of corrosion-resistant steel plays a decisive role in food processing.

Food particles will adhere more easily to surfaces with higher roughness, which can lead to the growth of harmful microorganisms and their transfer to other portions of processed food. Higher roughness surfaces are also more difficult to keep clean, and thus to maintain occupational hygiene, which is so important in the processing of food materials. Smooth surfaces with low roughness are durable enough to prevent cracking, peeling, or abrasive wear, but also successfully resist the accumulation of deposits and dirt during the production process, and are much easier

to clean and maintain. The recommendations on surface roughness contained propose that in order to obtain a surface smooth enough to prevent the accumulation of dirt and easy to clean and maintain, surface finishes should be used for surfaces in contact with food giving $Ra = 0.8\mu m$ or lower.

The Moonsystem® surface meets the above criteria.

6 RAILINGS

VARIOUS TYPES



RAILINGS WITH HORIZONTAL AND VERTICAL FILLINGS

Both railings with vertical and horizontal filling can be made entirely of stainless steel and in combination with black steel painted in the appropriate color from the RAL or DB palette. Moreover, it is possible to choose the size of the tubes themselves constituting the structure.

The tubes can be installed directly between the posts as well as running along the inside of the posts.

Possible tube cross-sections:

- Square tubes
- Rectangular tubes
- Round tubes



RAILINGS WITH GLASS FILLING

Combining stainless steel with glass is a very interesting visual experience. In our offer you will find railings with fillings:

- Transparent glass
- Coloured glass
- Milky glass
- Laminated glass
- Tempered, glued and ornamental glass

When choosing railings with glass filling, we offer our customers' safety glass (glued, P2, VSG), which guarantees high mechanical strength and increases the level of safety of use - this is always in the first place. Additionally, we have all the required certificates.



RAILINGS WITH WOOD ADDITIONS

We make railings with **wooden additions** that always look extremely stylish. Thanks to the use of selected materials, as well as appropriate protection of the wood itself, our structures are very durable and serve for a long time.

Railings made of steel profiles combined with wood are elegant and the addition of wood warms the interior and is pleasant to the touch. If the interior is finished with wood additions, such a railing will be a perfect complement to it.



RAILINGS WITH WITH CUSTOM FILLING

In our design department, we are able to produce for you the most demanding projects of railings filling from any chosen material. Non-standard patterns cut out of metal sheets, which are a modern and impressive complement to the image of each building, are very popular.

Following the spirit of the time and increasing requirements of each customer, we can apply unusual solutions with a fresh look at the needs.

Non-standard projects carried out in cooperation with the customer often turn out to be an excellent choice.



7 STAIRS

VARIOUS TYPES



STAIRCASES ON A STEEL FRAME

Stairs on a steel construction can be made in several possible ways. Depending on the effect we want to achieve, how much space we have, and how high stairs will be made it is necessary to choose an appropriate model. Our office will help you with that:

- **Straight stairs**
- **Stairs with a landing**
- **Winder stairs**

There are several different types of stairs based on a steel construction:

- **Single-beam stairs**
- **Double-beam stairs**
- **Stringer stairs**



CANTILEVER STAIRS



Floating stairs are the most hidden stair construction among those used inside houses and flats. Floating stairs bring to mind dominoes placed on the wall or shelves fixed to it stepwise with their shorter edges. **They are light and do not give the impression of being overwhelming.**

The design of the floating stairs is as minimalistic as possible. In such solutions, single steps seem to grow out of the wall. Nothing supports them from the bottom, and the structure is carefully hidden in the wall. floating stairs are attached to the load-bearing elements. The secret is that they are only a fusion, and the space between them is free.

ZIG ZAG STAIRS

Zig zag stairs are a wooden structure ideally suited to modern trends dominating when finishing the house. We install railings made of glass, steel, or other components to zig zag stairs.

Types of zig zag stairs:

- **Winder stairs** – they are winding along the entire surface, but at the same time, they are devoid of a landing.
- **Curved stairs** – the steps are of one size along the whole length of the stairs and their construction creates a harmonious arch.
- **Single flight stairs** – are the simplest type of stairs and are characterized by a single flight of stairs without landings.



SPIRAL STAIRS



They have their own unique charm and are perfect for small rooms. They ideally suit modern interiors. **Thanks to their spiral shape, they take up little space and give the rooms a unique, atypical character.** This is particularly useful in small flats, where every square meter is worth its weight in gold.

The verticality of the spiral staircase allows it to be placed anywhere in the interior, as opposed to traditional stairs which require more space.



Roofs made of stainless steel are becoming more and more popular.

Mainly because of their resistance to weather conditions, but also because of their unique appearance. The combination of various types of materials based on INOX steel structures gives great results.

We make roofs on structures (including guttering):

- Stainless steel
- Steel

Available types of roofing fill:

- Cellular polycarbonate (Plexiglas)
- Glass (transparent, tinted, milk)



All roofs are made after prior consultation with the customer and the appropriate finishing material is selected. It is possible to create canopies with guttering. We create appropriate designs, and at the client's request, we add a visualization that recreates the actual conditions of the roof assembly.



! Stainless steel structures have a 10-year guarantee, and the materials themselves are certified.

The entrance gate and fence are the showpieces of every home. Thanks to many years of experience in implementing individual projects in various European countries, we are able to meet the expectations of the most demanding customers.

We offer a complete service of making manual and automatic gates. The choice of the entrance gate depends on the space available. On narrow plots, swing gates are usually a better choice than sliding gates. On the other hand, on shallow but wide plots we recommend sliding entrance gates.



The gate to the property should harmonize with the rest of the elements, included in the fence, to maintain a coherent appearance of the whole fence. If you are wondering what gate to choose, we have a few suggestions for you:

SWING GATES

- **Single-leaf** – fitted in the corner of the plot will open onto the fence, not restricting the space on the property.
- **Double-leaf** – need much less space to open. An option for lovers of classics.

SLIDING GATES

- **Rail-bound** – have one leaf that slides along the fence on rollers along a rail mounted on the surface.
- **Self-supporting** – their wing slides on the rollers of the leading post, just above the surface, not touching the ground. However, more space along the fence must be planned for them.

ROOFINGS WITH GUTTERING 9



10 FURNITURE AND INTERIOR DESIGN



We create interior furnishings, tables, dressers, bookcases, wardrobes, consoles, and other furniture, including Industrial, Loft furniture made to measure.

The combination of steel and wood elements gives a unique effect of contrast. We approach each project individually, offering commitment, experience, and creativity.

Industrial style furniture for living room combines wood and metal motifs and its construction is simple and devoid of ornamentation. Thanks to this, the aptly correspond to the austerity of the arrangement and its slight factory, industrial atmosphere.



CUSTOMISED RADIATORS

Stainless steel radiators are a versatile heating solution. Stainless steel is a material that has increased resistance to mechanical damage and does not corrode even when in contact with various liquids.

Another benefit of stainless steel radiators is that they heat up quickly and give off heat slowly. Thus, radiators manufactured by our company save energy.



11 PROJECTS AND VISUALISATIONS



PROJECTS



Projects is a comprehensive process of planning how the order is to be made. It is preceded by a detailed interview with the household members, their needs, preferences, as well as an inventory of the place it is of concern. On this basis, the concept of arrangement is prepared, as well as the functional arrangement of the elements included in it. The project also includes detailed guidelines for its executors.

This is a solution for those who need comprehensive assistance!

Our team is ready to assist you in choosing individual solutions. We have our own design office, thanks to which we can create individual solutions. We cooperate with the client at every stage - before we start - at the planning stage, during execution, and afterward.



VISUALISATIONS



The terms design and visualization, although used interchangeably, mean two completely different things and it is a mistake to confuse them.

It is, therefore, crucial to understand what a design is and what visualization is, and how they differ. This will allow us to avoid confusion and decide if a technical design is sufficient for you.

Where the limitations of the design begin, a colorful visualization appears, coloring white, technical pages. There is no better way to visualize the appearance of a design item than to see it in all its glory!

VISUALISATION



REALISATION



MANY DIFFERENT PROJECTIONS!



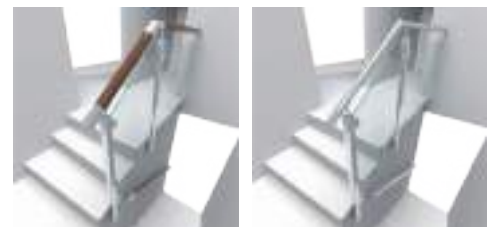
Visualization is nothing more than presenting information on what the implementation will look like in the closest possible way to reality. Visualization is a beautiful picture, which shows the final version of what a decorated interior or a smaller element of it is to look like. They often make a great impression on the recipients, because they present an ideal version of reality.

A visualization created by us, reflecting the client's idea, will allow you to transfer your vision from imagination to paper, computer screen, or smartphone.

Thanks to the visualization you will be able to empirically check the appearance of projects carried out by our company.



FIND OUT DIFFERENT SOLUTIONS!



12 STEEL CONSTRUCTIONS



Our passion is to create, so no vision of our client is a challenge for us. When designing structures, we select appropriate materials, solutions, and finishes, while respecting our client's criteria.



12 CUSTOM EXECUTIONS

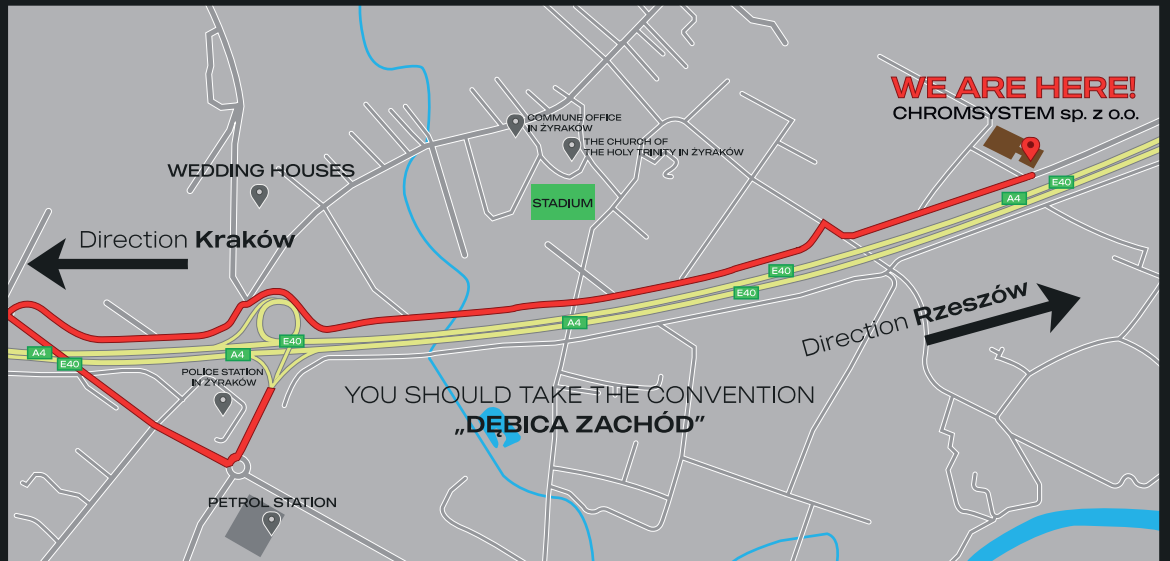






CHROMSYSTEM sp. z o.o.

Żyraków 207b, 39-204
 Nr. tel.: +48 535 707 891
 Mail: info@chromsystem.pl
 NIP: 8722434723
 REGON: 520626375
 KRS: 0000936844



POLSKI

+48 535 707 891
info@chromsystem.pl



ENGLISH

+48 535 707 891
info@chromsystem.pl



DEUTSCH

+48 535 707 891
info@chromsystem.pl



NORSK

+47 410 67 198
wladek.p@chromsystem.pl



ITALIANO

+48 535 707 891
info@chromsystem.pl



ESPAÑOL

+48 667 838 385
info@chromsystem.pl



SCHWEIZ

+48 535 707 891
info@chromsystem.pl

