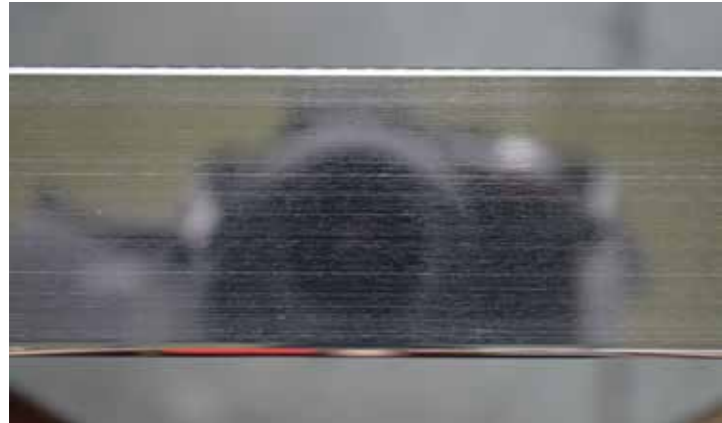


POLISHING OF STAINLESS STEEL

A PHOTO OF A REFLECTION ON A STEEL SURFACE (SHARPNESS ON A REFLECTION)



A PHOTO OF THE STEEL SURFACE (FOCUS ON THE SURFACE)



SHINE CHROMSYSTEM

Surface comparable to an R2 reflective finish with **clear contours**.

Finish with **Ra < 0.100 μm**.

POLISH CHROMSYSTEM

A high reflectance finish where **details** are can be seen (face is clearly visible), metallurgical blemishes are not removed (scratches under the surface).

The effect is very much dependent on the feedstock.

Finish at the level of **Ra ~ 0.070 μm**.

ULTRA POLISH CHROMSYSTEM

A finish with an ideal reflectance in which **fine details** are visible, metallurgical blemishes are removed, depending on the class of the material entrusted, occasional points may remain, selection of the material is recommended.

Finish at the level of **Ra ~ 0.050 μm**.

PREMIUM POLISH CHROMSYSTEM

A finish with a super ideal reflectance in which **all details** are visible, metallurgical blemishes are removed. The effect is possible to obtain after prior contact and joint selection of the material. It is recommended to order a profile polishing service together with the material.

! Not every material is suitable for the highest quality polish.

Finish exceeding available materials on the market **Ra ~ 0.030 μm**.

! We have research from a laboratory profilometer and a durometer. Feel free to contact us to discuss the results.

In order to obtain a perfect surface smoothness **Ra<0,02μm**, and a **mirror effect**, and at the same time not to lose the possibility of welding (as in the case of electropolishing) **the only option is to make polishing by mechanical machining**. Chromsystem has developed an **innovative process** for polishing rectangular profiles, which meets the highest requirements.

This smooth surface is less prone to accumulate airborne dirt or moisture than any other rolling surface and is easy to clean.

In our offer, you can choose from 4 types of polished surfaces:

- Shine Chromsystem
- Polish Chromsystem
- Ultra Polish Chromsystem
- Premium Polish Chromsystem.



! * In the case of strict static requirements for the "Ultra Poler Chromsystem" surface, it is recommended to order a material 0.5 mm thicker (large material loss). The quality of the metallurgical product is responsible for the geometry of the profiles.